

What is the Youth Advisory Committee?

The Youth Advisory Committee or YAC plays an important role in assisting Council to develop initiatives and projects for young people living in the Greater Hume Local Government area.

The YAC is for young people aged 15 to 24 years and meet regularly to discuss issues, express views and contribute to the development of the local Greater Hume community.

The Committee –

- Has the opportunity to influence decisions made by council that affect young people;
- Organises and participates in youth activities and events such as youth week;
- Contributes to important community development projects affecting young people; and
- Informs council on issues that are important to young people

What's Involved?

- Regular meetings (location, times and dates are confirmed after the first meeting)
- Plan, organise and participate in youth events, activities and projects

So if you want to...

Have your say, be heard, get involved and gain new skills, and make a difference.....

Then Greater Hume YAC is for you!

About Greater Hume Shire Council

Greater Hume Shire Council is comprised of elected representatives who are responsible for determining policy and overall strategic direction for the Shire and the Council staff who are responsible for implementing the decisions of the Council.

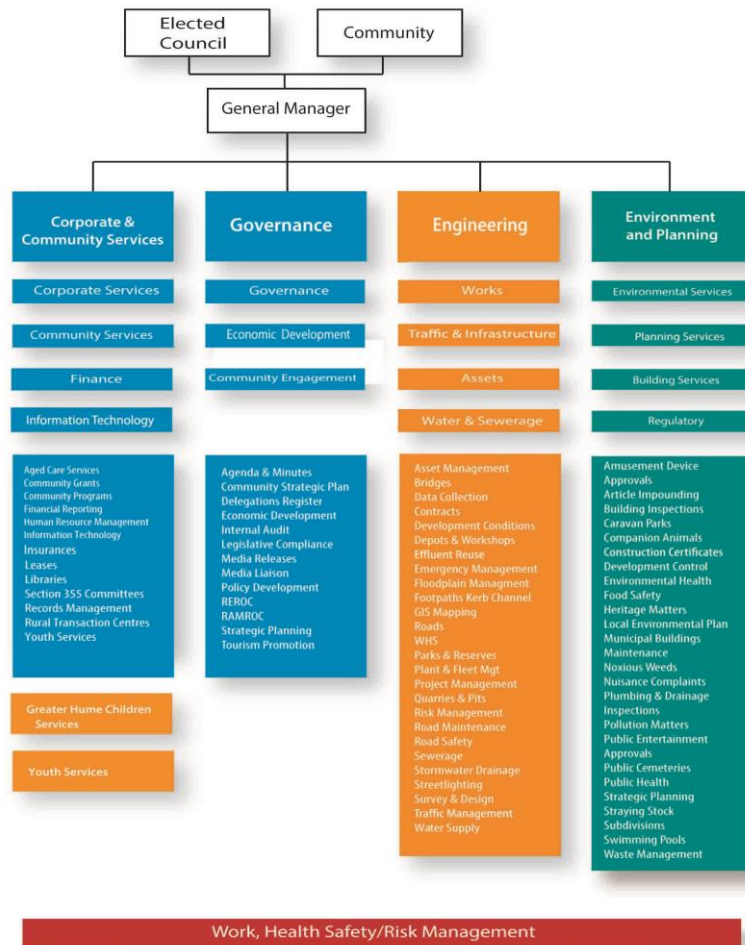
The organisational structure is made up of three departments, being Corporate and Community Services, Engineering Services and Environment and Planning Services.

The General Manager and department Directors form the Management Executive which manage the day to day operations of the Council and provide professional advice to the Councillors.

Council Elections were last held on 8 September 2012, where the nine councillors were elected under a "wards" system. The Mayor is elected by the Councillors.

Document Name	Version Number	Date of Issue	Review Date
CORP – Youth Advisory Committee Information Guide	1.0.0	17 March 2015	February 2016

Greater Hume Shire Council Structure



Youth Advisory Committee Terms of Reference

The Greater Hume Shire Youth Advisory Committee is a committee of Greater Hume Shire Council, with its members appointed for 2 years

The committee is open to young people Aged 12-24 years that live, study, or work in the Greater Hume shire area.

Aim

The Greater Hume Youth Advisory Committee has been established by Greater Hume Shire Council to work proactively and in partnership with Council and other agencies to raise and address issues of concern in the Greater Hume Local Government Area (LGA) through a consultative, collaborative and action-oriented approach.

The purpose of the Greater Hume Youth Advisory Committee is to provide young people in the Greater Hume LGA with the opportunity to participate engage and be active citizens in their local community.

Youth participation is vital in the Greater Hume community as it provides opportunities for young people to feel empowered as they are taking part in the decision-making processes that are ultimately affecting their lives.

The Greater Hume Youth Advisory Committee seeks and represents the ideas, aspirations and views of Greater Hume young people, providing a local 'youth voice' to Council.

The group also provide recommendations and advice to Council on matters and decisions that affect or are relevant to Greater Hume young people.

The Greater Hume Youth Advisory Committee increases communication exchange between young people, Council and the local community as well as encourage youth participation in Council initiatives and strategies.

Further to this, the Greater Hume Youth Advisory Committee assists in promoting a positive image of young people of the Greater Hume LGA.

Role of the Greater Hume Youth Advisory Committee

- To support and facilitate communication between Council and the Greater Hume Shire community about youth issues and youth policy
- To plan, organise, implement and evaluate cultural, recreational, and social activities/events as a group for young people in the Greater Hume LGA
- To educate/ build capacity, provide support and direction to Council staff in regards to youth issues in the Greater Hume community
- To work with Council staff in a mentoring role to build the capacity of Council officers to recognise and address youth issues that arise within their work
- To provide a forum for young people to voice their opinions and to develop an understanding of their community
- To work proactively in developing strategies with Council and with other organisations including lobby and advocate on youth issues affecting young people in the Greater Hume LGA;
- To assist in raising awareness and increase positive promotion of young people in the Greater Hume community
- To ensure signed media consent forms are returned to Greater Hume Shire Council
- To be actively involved in the evaluation and review of the Greater Hume Shire Council Youth Strategic Plan, and to be actively involved in the development and implementation of Council's future Youth Strategy Action Plan document/s

Membership

Membership is to be drawn through invitation after completion of a Greater Hume Youth Advisory Committee Application Form. This form can be found on the Greater Hume Shire Council website or by contacting Council on 0417 212 069 or 1300 653 538

Membership is based on the following:

- The young person is between the ages of 12 and 24 years
- The young person is able to attend bi monthly meetings, actively participate and commit to the full length of the meetings unless prior notification has been made (excluding emergencies)
- Each member is required to participate for a minimum duration of 1 year and a maximum duration of 2 years membership or at turning 25 years old
- Members of the Greater Hume Youth Advisory Committee are able to take a leave of absence if agreed to by the other members of the group at a meeting. A maximum of 3 months leave of absence is permitted
- The Greater Hume Youth Advisory Committee welcomes Council representatives to meetings and activities/events facilitated by the group upon invitation or request from a council representative
- Where possible, representation will also aim to cover the geographical spread of the Greater Hume LGA, and also attempt to provide representation of a range of youth target groups in membership
- At any given time, the Greater Hume Youth Advisory Committee is limited to a maximum capacity of 12 members

Termination of Membership

A Member may be terminated for the following reasons:

- Unprofessional conduct towards other Members, Chairperson and or general community
- Failure to follow the Terms of Reference
- Failure to attend three consecutive meetings (without formal leave)

Roles and Responsibilities

Of Group

Group's standards and group agreement;

All members will show respect and dignity towards each other and their opinions, keeping meetings friendly and focussed on the issues;

Meetings are closed to the public, unless otherwise agreed to;

Members are expected to wear the fusion youth t-shirt that is supplied in members pack at events; External parties (including businesses, services etc) are subject to invitation

Of Council

GHS Council will support and resource the Greater Hume Youth Advisory Committee members through:

- Provision of relevant training and leadership development of the group members to enable them to fulfil their roles effectively;
- Provide administrative support to the group through assistance with but not limited to the following: photocopying, access to internet, assistance with minutes, meeting agendas, organise meeting venue, refreshments for meeting, providing youth information/resources;
- Providing access to meetings/activities for young people with disabilities or young people who are disadvantaged;
- Reimbursement for costs associated or incurred by members of the group as they perform their duties. Reimbursements will only be with prior approval of Greater Hume Council and upon production of a receipt;
- Support and encourage the positive promotion of the Greater Hume Youth Advisory Committee both internally within Council and externally in the wider community. This includes ensuring media consent for photographs/videos are provided by members of the group;
- To evaluate and review the Greater Hume Youth Advisory Council Terms of Reference document at the end of each 2 year term in consultation with the Greater Hume Youth Advisory Group members. Any changes would need to be endorsed at a Greater Hume Youth Advisory Council meeting.

Meetings

Meetings are held regularly from February to December of each calendar year at an agreed venue

Guidelines for these meeting include but are not limited to:

All Youth Advisory Committee meetings should be minuted with these minutes to be confirmed at the following meeting.

Discussions at the meetings shall be informal, though keeping with the meeting agenda/program. Decision making of the group will be ideally through consensus. However, where consensus can not be reached, then a vote shall be taken of members present. Outcomes of discussions and any decisions made at the meetings are required to be made through a formal motion.



Frequently Asked Questions

The Youth Advisory Council is a subcommittee of Greater Hume Shire Council, and provides an important opportunity for young people to have input into Council decisions

The Youth Advisory Committee:

- Helps Greater Hume Shire Council find out about important issues for young people in the local area
- Provides advice to Council about how these issues can be addressed
- Develops local initiatives and projects for young people

Who is on the Youth Advisory Committee?

- The Youth Advisory Council is made up of 12 young people from the Greater Hume Shire Local Government area (LGA).
- The Greater Hume Shire Council Youth Development Officer
- Special guests may attend meetings from time to time.

Who can be a member of the Youth Advisory Committee?

- Young people can apply to be a member of the Council if they are 12-24 years of age, live in Greater Hume LGA and want to make a difference.

How can I apply to be on the Youth Advisory Committee?

- To be considered for a position you must submit a written application form to Council by the closing date.
- Application forms are available on the Councils Website.
- A new Youth Advisory Council is appointed every two years and vacancies can be filled during the two-year term.
- Greater Hume Shire Council aim to have a diversity of views and experiences on the Council and selections are made on this basis.
- You do not need previous experience to be a member, only a willingness to get involved.
- Applications are available from www.greaterhume.nsw.gov.au

When are the meetings held?

- Meetings are held every second week or by agreement during the school term
- Transport is available for students to attend
- A light supper will be supplied at the meetings.

What do I need to pay?

- The only cost of participating is your time and commitment.

What is expected of Youth Advisory Committee members?

If you are appointed to the Youth Advisory Committee you will be expected to:

- Attend and participate in meetings
- Contribute your ideas and enthusiasm
- Carry out any tasks that you volunteer for
- Show respect to other Council members and their views
- Be willing to work as part of a team
- Follow activity guidelines, which are designed for your safety

Greater Hume Shire Council reserves the right to ask a participant to leave the program if they do not meet these expectations.

Do I get any training to help me in my role?

- Yes. Council provides orientation and ongoing training to all Youth Advisory Committee members

What are the benefits of participating in the Youth Advisory Committee?

There are heaps of benefits including:

- Participating in the planning and implementation of youth events
- The opportunity to have a say about important issues
- Learning about how government and formal committees work
- Making new friends and networks
- Developing your confidence
- The opportunity to make a difference in the community

Further Information

Susan Kane – Library and Youth Services Development Officer on 0417 212 069

skane@greaterhume.nsw.gov.au

