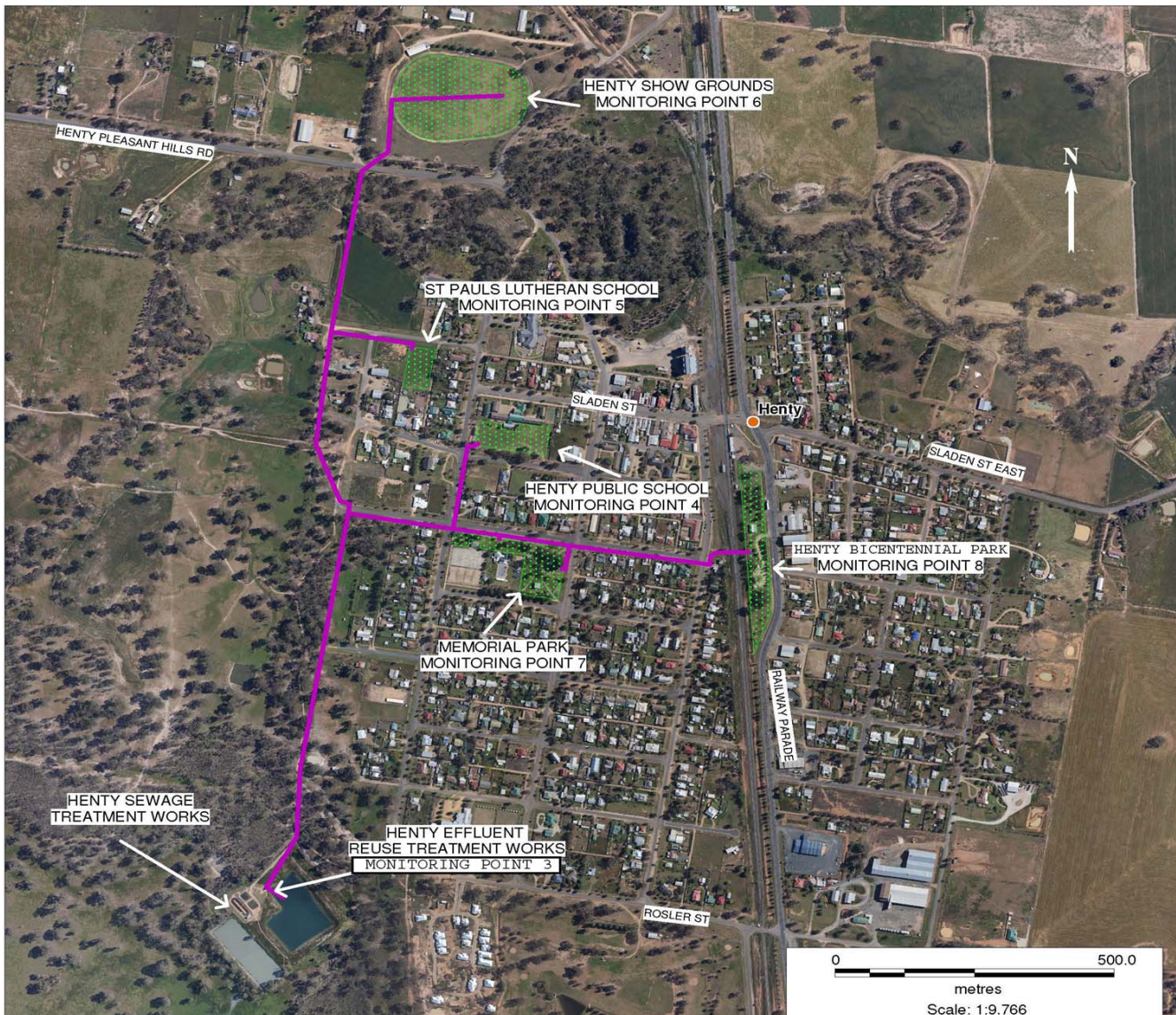


**POLLUTION MONITORING DATA
HENTY EFFLUENT REUSE AREAS**



Environment Protection Licence No.: 3726

Link to full licence on EPA website:

<http://www.environment.nsw.gov.au/prpoeoapp/ViewPOEOLicence.aspx?DOCID=31290&SYSUID=1&LICID=3726>

Licensee: Greater Hume Shire Council, PO Box 99 Holbrook NSW 2644

Address of facility: Corner Street, Henty NSW 2658

Monitoring Point 3

Location: Pump station discharge flow meter to effluent reuse area

Published: 31 July 2013

Obtained: 30 June 2013

Sampled: From 1 July 2012 to 30 June 2013

Item	Unit	Frequency	Lowest result	Mean result	Max result	Volume limit	Exceedence (yes/no)
Daily flow	kl/day	Daily	0	18	426	N/A	N/A

Monitoring Point 4

Location: Henty Public School effluent reuse area

Published: 31 July 2013

Obtained: 31 May 2013

Sampled: 13 May 2013

Pollutant	Unit	Frequency	Sampling Method	Measurement	Comments
Conductivity	decisiemens per metre	Yearly	Composite sample	0.25	
Nitrogen (total)	milligrams per kilogram	Yearly	Composite sample	1460	
Phosphorus (total)	milligrams per kilogram	Yearly	Composite sample	188	
Sodium Adsorption	sodium adsorption ratio	Yearly	Composite sample	12	

Monitoring Point 5

Location: St Pauls Lutheran School effluent reuse area:

Published: 31 July 2013

Obtained: 31 May 2013

Sampled: 13 May 2013

Pollutant	Unit	Frequency	Sampling Method	Measurement	Comments
Conductivity	deciSiemens per metre	Yearly	Composite sample	0.37	
Nitrogen (total)	milligrams per kilogram	Yearly	Composite sample	2590	
Phosphorus (total)	milligrams per kilogram	Yearly	Composite sample	1760	
Sodium Adsorption	sodium adsorption ratio	Yearly	Composite sample	1	

Monitoring Point 6

Location: Henty Show Grounds effluent reuse area

Published: 31 July 2013

Obtained: 31 May 2013

Sampled: 13 May 2013

Pollutant	Unit	Frequency	Sampling Method	Measurement	Comments
Conductivity	deciSiemens per metre	Yearly	Composite sample	0.26	
Nitrogen (total)	milligrams per kilogram	Yearly	Composite sample	1240	
Phosphorus (total)	milligrams per kilogram	Yearly	Composite sample	287	
Sodium Adsorption	sodium adsorption ratio	Yearly	Composite sample	6	

Monitoring Point 7

Location: Henty Memorial Park effluent reuse area

Published: 31 July 2013

Obtained: 31 May 2013

Sampled: 13 May 2013

Pollutant	Unit	Frequency	Sampling Method	Measurement	Comments
Conductivity	deciSiemens per metre	Yearly	Composite sample	0.27	
Nitrogen (total)	milligrams per kilogram	Yearly	Composite sample	1490	
Phosphorus (total)	milligrams per kilogram	Yearly	Composite sample	210	
Sodium Adsorption	sodium adsorption ratio	Yearly	Composite sample	11	

Monitoring Point 8

Location: Henty Bicentennial Park effluent reuse area

Published: 31 July 2013

Obtained: 31 May 2013

Sampled: 13 May 2013

Pollutant	Unit	Frequency	Sampling Method	Measurement	Comments
Conductivity	deciSiemens per metre	Yearly	Composite sample	0.32	
Nitrogen (total)	milligrams per kilogram	Yearly	Composite sample	1980	
Phosphorus (total)	milligrams per kilogram	Yearly	Composite sample	312	
Sodium Adsorption	sodium adsorption ratio	Yearly	Composite sample	17	