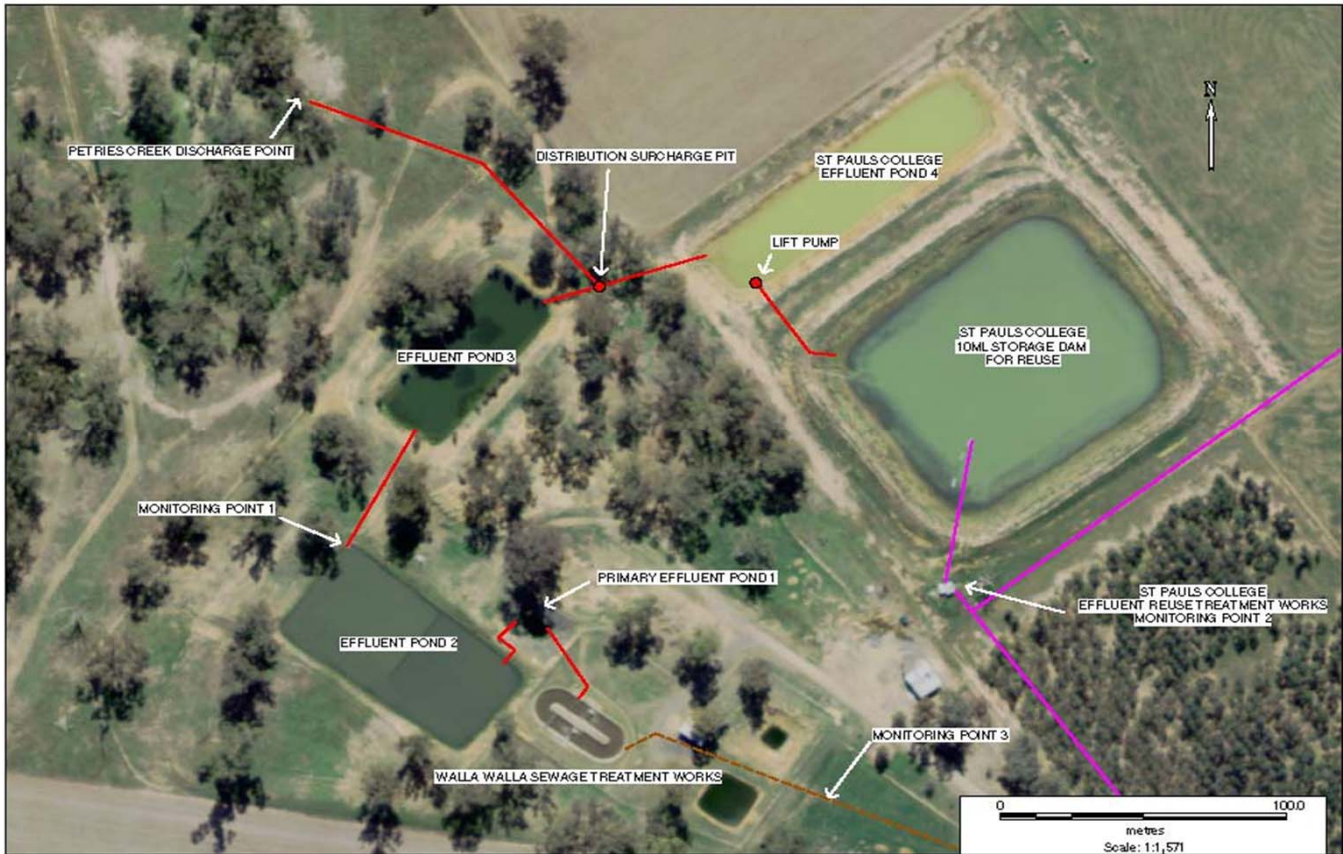


**POLLUTION MONITORING DATA
WALLA WALLA SEWAGE TREATMENT WORKS**



Environment Protection Licence No.: 2563

Link to full licence on EPA website:

<http://www.environment.nsw.gov.au/prpoeoapp/ViewPOEOLicence.aspx?DOCID=31794&SYSUID=1&LICID=2563>

Licensee: Greater Hume Shire Council, PO Box 99 Holbrook NSW 2644

Address of facility: Klemke Avenue, Walla Walla NSW 2659

Monitoring Point 1

Location: Sampling point prior to discharge from effluent pond 2

Published: 31 July 2013

Obtained: 28 Feb 2013

Sampled: 14 Feb 2013

| Pollutant | Unit | Frequency | Measurement | 100 percentile limit | Exceedence (yes/no) | Comments |
|---------------------------|-----------|-----------|-------------|----------------------|---------------------|----------|
| Biochemical oxygen demand | mg/l | Quarterly | 12 | 20 | no | |
| Chlorophyll-a | ug/L | Quarterly | 72 | | | |
| Conductivity | ms/cm | Quarterly | 1300 | | | |
| Faecal Coliforms | cfu/100ml | Quarterly | 41 | | | |
| Nitrogen (total) | mg/l | Quarterly | 6.7 | 20 | no | |
| Oil and Grease | mg/l | Quarterly | <2 | 10 | no | |
| pH | | Quarterly | 8.4 | | | |
| Phosphorus (total) | mg/l | Quarterly | 8.9 | 10 | no | |
| Total suspended solids | mg/l | Quarterly | 12 | 30 | no | |

Monitoring Point 3

Location: Flow meter at the inlet to Sewage Treatment Plant

Published: 31 July 2013

Obtained: 28 Feb 2013

Sampled: From 1 July 2012 to 28 Feb 2013

| Item | Unit | Frequency | Lowest result | Mean result | Max result | Volume limit | Exceedence (yes/no) | Comments |
|------------|--------|-----------|---------------|-------------|------------|--------------|---------------------|-------------------|
| Daily flow | kl/day | Daily | 82 | 117 | 1464 | 500 | no | Wet weather event |