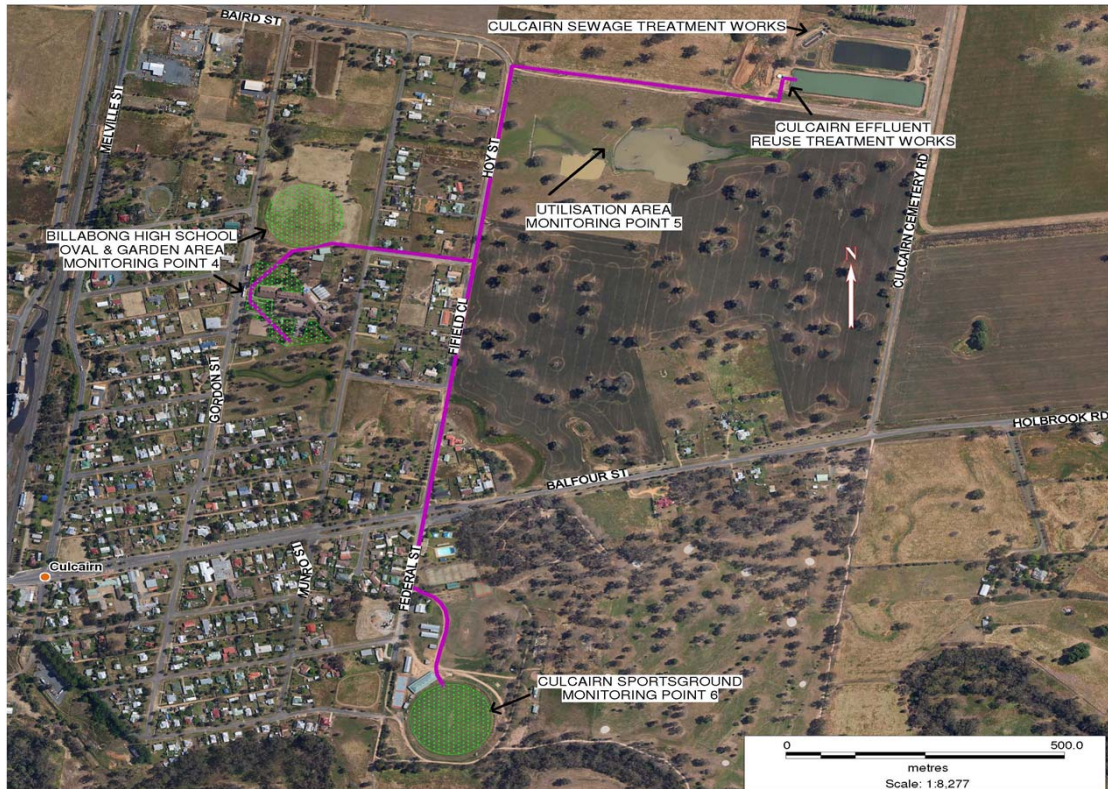


**POLLUTION MONITORING DATA
CULCAIRN EFFLUENT REUSE AREAS**



Environment Protection Licence No.: 3727

Link to full licence on EPA website:

<http://www.environment.nsw.gov.au/prpoeoapp/ViewPOEOLicence.aspx?DOCID=31793&SYSUID=1&LICID=3727>

Licensee: Greater Hume Shire Council, PO Box 99 Holbrook NSW 2644

Address of facility: Cemetery Road, Culcairn NSW 2660

Monitoring Point 4

Location: Culcairn Sportsground effluent reuse area

Published: 31 July 2013

Obtained: 31 May 2013

Sampled: 13 May 2013

Pollutant	Unit	Frequency	Sampling Method	Measurement	Comments
Conductivity	deciSiemens per metre	Yearly	Composite sample	0.2	
Nitrogen (total)	milligrams per kilogram	Yearly	Composite sample	1430	
Phosphorus (total)	milligrams per kilogram	Yearly	Composite sample	254	
Sodium Adsorption	sodium adsorption ratio	Yearly	Composite sample	12	

Monitoring Point 5

Location: Culcairn effluent reuse area (Utilisation area)

Published: 31 July 2013

Obtained: 31 May 2013

Sampled: 13 May 2013

Pollutant	Unit	Frequency	Sampling Method	Measurement	Comments
Conductivity	deciSiemens per metre	Yearly	Composite sample	0.16	
Nitrogen (total)	milligrams per kilogram	Yearly	Composite sample	1320	
Phosphorus (total)	milligrams per kilogram	Yearly	Composite sample	224	
Sodium Adsorption	sodium adsorption ratio	Yearly	Composite sample	4	

Monitoring Point 6

Location: Culcairn Billabong high School, oval and garden area

Published: 31 July 2013

Obtained: 31 May 2013

Sampled: 13 May 2013

Pollutant	Unit	Frequency	Sampling Method	Measurement	Comments
Conductivity	deciSiemens per metre	Yearly	Composite sample	0.23	
Nitrogen (total)	milligrams per kilogram	Yearly	Composite sample	2220	
Phosphorus (total)	milligrams per kilogram	Yearly	Composite sample	332	
Sodium Adsorption	sodium adsorption ratio	Yearly	Composite sample	11	