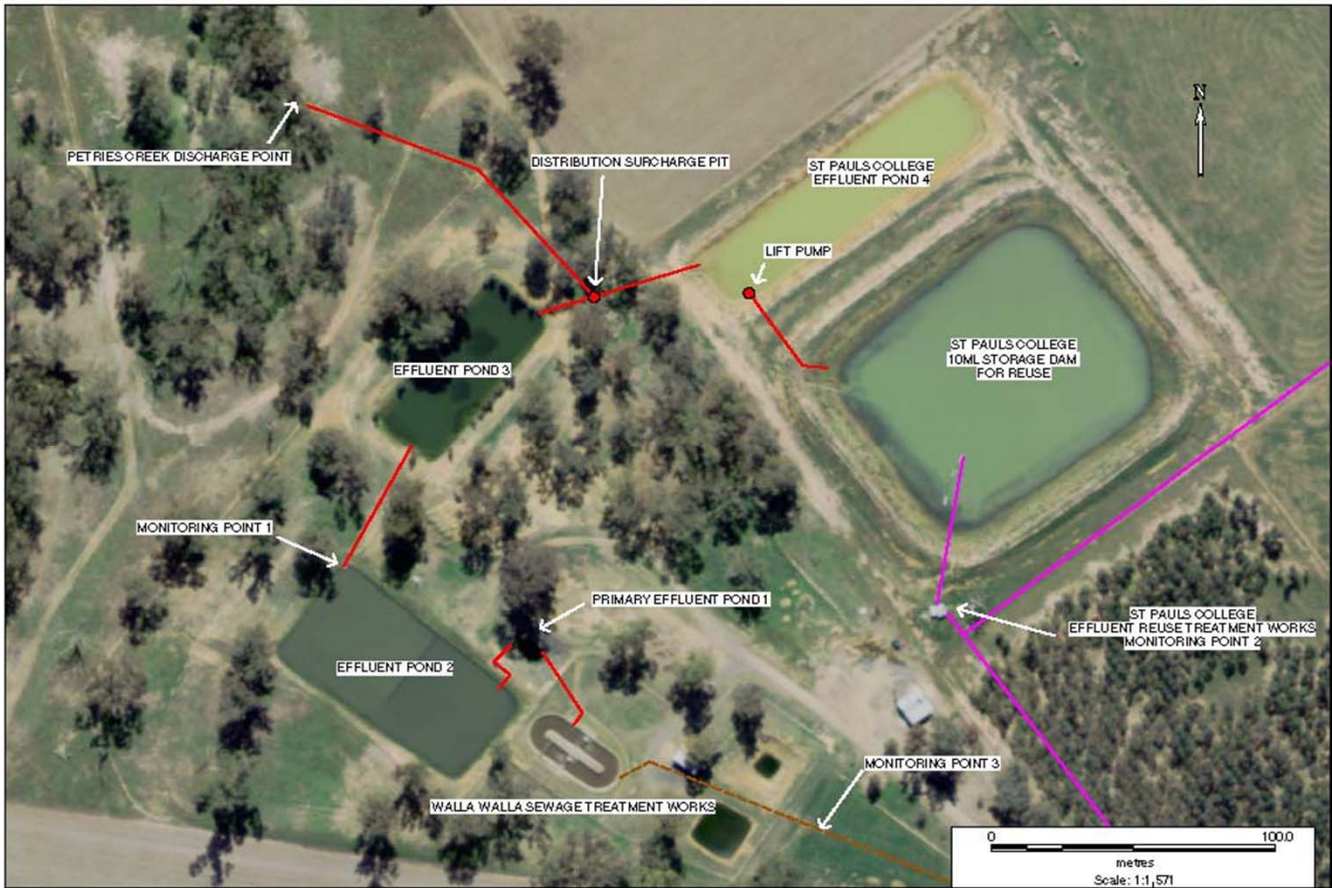


**POLLUTION MONITORING DATA  
WALLA WALLA SEWAGE TREATMENT WORKS**



**Environment Protection Licence No.:** 2563

Link to full licence on EPA website:

<http://www.environment.nsw.gov.au/prpoeoapp/ViewPOELicence.aspx?DOCID=31292&SYSUID=1&LICID=2563>

**Licensee:** Greater Hume Shire Council, PO Box 99 Holbrook NSW 2644

**Address of facility:** Klemke Avenue, Walla Walla NSW 2659

**Monitoring Point 1**

**Location:** Sampling point prior to discharge from effluent pond 2

**Published:** 22 June 2012

**Obtained:** 28 May 2012

**Sampled:** 16 May 2012

Pollutant	Unit	Frequency	Measurement	100 percentile limit	Exceedence (yes/no)	Comments
Biochemical oxygen demand	mg/l	Quarterly	1	20	no	Retested by Riverina Laboratory on 20/6/12
Chlorophyll-a	ug/L	Quarterly	4.1			
Conductivity	ms/cm	Quarterly	720			
Faecal Coliforms	cfu/100ml	Quarterly	4			
Nitrogen (total)	mg/l	Quarterly	1.8	20	no	
Oil and Grease	mg/l	Quarterly	<2	10	no	
pH		Quarterly	8.5			
Phosphorus (total)	mg/l	Quarterly	3.9	10	no	
Total suspended solids	mg/l	Quarterly	8	30	no	

**Monitoring Point 3**

**Location:** Flow meter at the inlet to Sewage Treatment Plant

**Published:** 22 June 2012

**Obtained:** 1 June 2012

**Sampled:** From 1 July 2011 to 31 May 2012

Item	Unit	Frequency	Lowest result	Mean result	Max result	Volume limit	Exceedence (yes/no)	Comments
Daily flow	kl/day	Daily	83	122	1644	250	Under review	Wet weather event