

## Disposal

Dispose of asbestos waste promptly to a landfill that can lawfully accept it. Failure to do so can devalue your property, put your health and your family's health at risk, and expose you to hefty fines and clean-up costs. It is illegal to dispose of asbestos waste in domestic garbage bins. It is also illegal to recycle, re-use, or illegally dump asbestos products.

The Environment Protection Authority and councils can issue hefty fines for disposing of asbestos waste illegally.

**Don't risk a \$5000 fine, penalties of up to \$5 million, or 7 years jail.**

- ✓ Visit [www.environment.nsw.gov.au/waste/asbestos](http://www.environment.nsw.gov.au/waste/asbestos) for a list of licensed landfills that accept asbestos waste from the public.
- ✓ Most landfills will not accept asbestos without prior booking or notification. Always contact the landfill beforehand to find out when asbestos waste is accepted and any requirements for delivering asbestos to the landfill.
- ✓ When delivering your waste to the landfill, ensure that you inform the landfill operator that the waste contains asbestos.
- ✓ Keep copies of receipts from landfills where asbestos has been taken. If you hire a company to dispose of asbestos, ask for copies of disposal receipts. Councils may require you to produce these receipts as proof of proper disposal.

**x** Illegally dumped asbestos can pose a health risk and harm the environment.

Ensure asbestos from your property is taken to a landfill that can legally accept it.



## Help and advice

For advice on the safe removal or working with asbestos or fibro:

- see [www.nsw.gov.au/fibro](http://www.nsw.gov.au/fibro)
- contact the WorkCover NSW Assistance Service on 131 050
- email [contact@workcover.nsw.gov.au](mailto:contact@workcover.nsw.gov.au)
- visit the WorkCover NSW website at [www.workcover.nsw.gov.au](http://www.workcover.nsw.gov.au).

For further advice on storing, transporting and disposing of asbestos, call the Environment Line on 131 555 or your local council.

Environment Protection Authority  
59–61 Goulburn Street, Sydney  
PO Box A290, Sydney South 1232  
Phone: 131 555 (NSW only — publication and information requests)

Phone: (02) 9995 5000 (switchboard)  
Fax: (02) 9995 5999  
TTY: (02) 133 677 then ask for 131 555  
Speak and listen: 1300 555 727 then ask for 131 555

Email: [info@environment.nsw.gov.au](mailto:info@environment.nsw.gov.au)  
Website: [www.epa.nsw.gov.au](http://www.epa.nsw.gov.au)

ISBN 978 174359 101 7 EPA 2013/0342  
Printed on sustainable paper June 2013



## Safely disposing of asbestos waste from your home



**Important information for home renovators and builders**

**Legal requirements for the safe handling, storage, transport and disposal of asbestos waste**

## Asbestos fibres are hazardous when inhaled. They can be released into the air when asbestos products are incorrectly handled, removed or transported for disposal.

This brochure contains information on the safe handling, storage, transport and disposal of the bonded asbestos commonly found in homes. Usually referred to as 'fibro', bonded asbestos includes products made from asbestos cement, such as flat or corrugated sheeting, water and flue pipes, and casing for electrical wires.

This information does not cover the requirements for handling unbonded asbestos, such as fibres and dust. Asbestos removal contractors licensed by WorkCover NSW can advise on the removal and disposal of this form of asbestos.

You can't always identify asbestos by simply looking at it. The most accurate way to find out if your fibro contains asbestos is to have it inspected by an occupational (asbestos) hygienist and tested by a NATA accredited laboratory. Check your local telephone directory or the Yellow Pages for listings.

### Keeping yourself safe

Always follow safety guidelines when removing asbestos products to prevent release of dust and fibres. For information on safe removal practices go to:

- [www.nsw.gov.au/fibro](http://www.nsw.gov.au/fibro)
- [www.workcover.nsw.gov.au](http://www.workcover.nsw.gov.au)
- [www.asbestosawareness.com.au](http://www.asbestosawareness.com.au)

✘ Don't break asbestos into smaller pieces to make it fit into skip bins, vehicles or bags. Broken pieces of asbestos can generate dust and fibres. Keep asbestos sheeting intact during removal and handle it with care to prevent breakage.

### Handling and storage

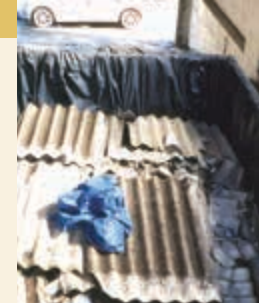
Once bonded asbestos products have been safely removed, you should use the following approaches during handling and storage to minimise the release of dust and fibres:

- ✓ Wet the asbestos waste and keep it damp to prevent dust — but don't use too much water and ensure water does not run off into drains.
- ✓ Keep the waste covered at all times so that no dust is created — wrap it in heavy duty plastic and secure with tape.
- ✓ Separate the asbestos waste and store it apart from other types of waste.
- ✓ Store the waste securely to prevent unauthorised access to it.
- ✓ Remove the waste from the site as soon as possible.



If using a skip bin to store your asbestos waste:

- ✓ Ensure the skip bin is fully lined with heavy duty plastic before placing asbestos waste in it.
- ✓ Keep the waste damp and don't overfill the skip.
- ✓ Cover and secure the contents when full.



### Transport

You don't need a licence to transport bonded asbestos waste. However you must use the following practices when transporting it:

- ✓ Ensure the waste has been wetted and securely packaged in heavy duty plastic prior to loading.
- ✓ Take it to a landfill that can lawfully accept asbestos.
- ✓ Ensure no residual asbestos remains in vehicles or containers before they leave the landfill.



**You can be fined if your asbestos waste is not stored or transported properly.**



✘ Don't mix asbestos with your general building waste. If your skip bin contains asbestos your building waste can't be recycled, and landfills won't accept it unless it is properly sealed in heavy duty plastic. You will also pay more for disposal costs and risk a fine.

