

FIGURE G15
**FLOOD IMPACT 1% AEP
 OPTION B1
 PLEASANT HILLS ROAD PLAYING FIELDS BASIN**



J:\Jobs\114040\ARC\Arc_Maps\Henty\Mitigation\FigureG15_Option_B1_Pleasant_Hills_Rd_Playing_Field_Basin.mxd



Embankment
 Roads
 Cadastre

Change in Flood Level (m)

- < -0.3
- 0.3 - -0.2
- 0.2 - -0.1
- 0.1 - -0.05
- 0.05 - -0.02
- No Impact
- 0.02 - 0.05
- 0.05 - 0.1
- 0.1 - 0.2
- 0.2 - 0.3
- > 0.3
- No Longer Flooded
- Newly Flooded

This figure displays the change in peak flood level with implementation of this flood mitigation option. The warmer colours (yellow to red) indicate an increase in peak flood level and the cooler colours (shades of blue) indicate a decrease. The black areas are no longer flooded and the purple areas are areas that were previously not flooded but are now flooded due to the option's implementation.

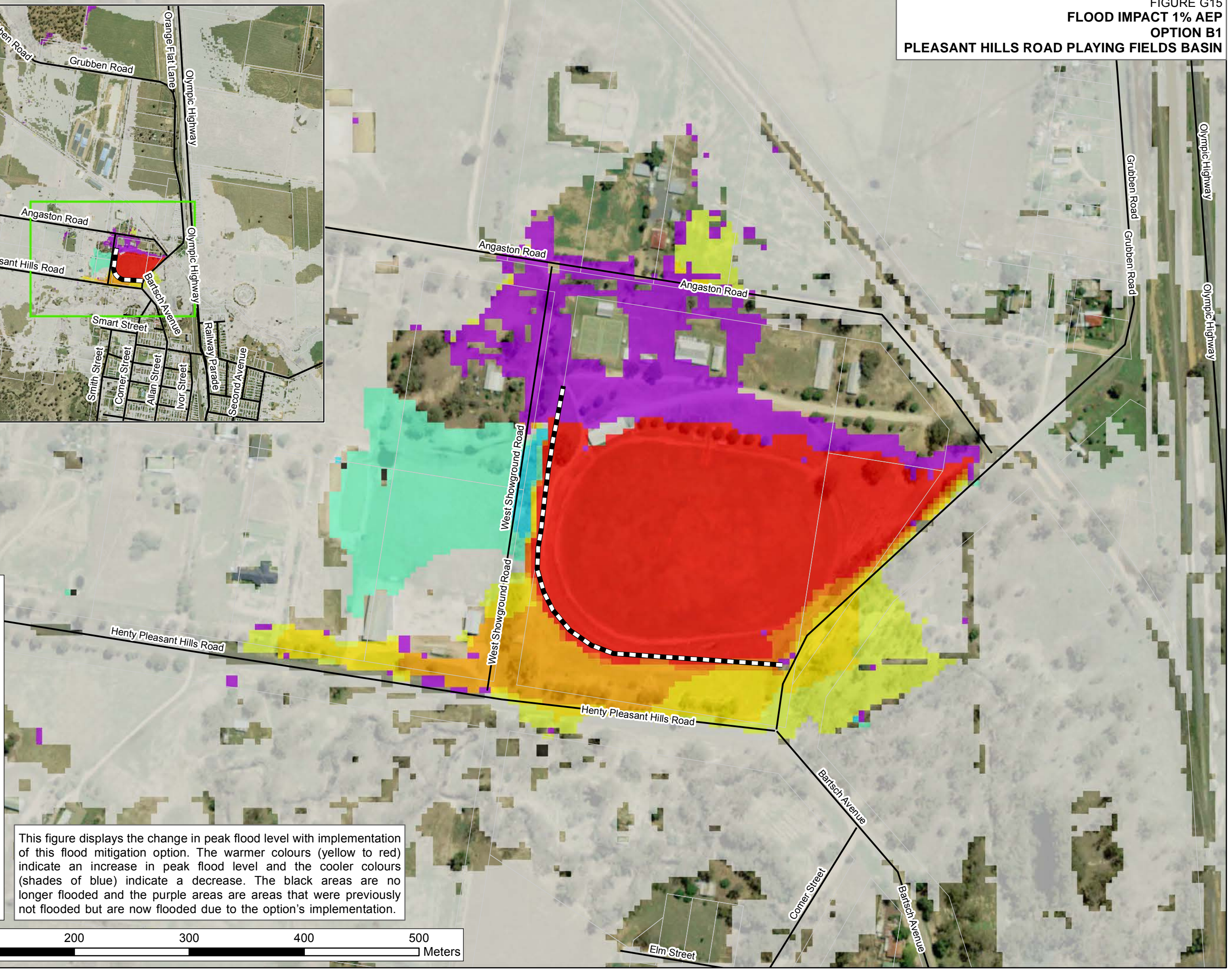
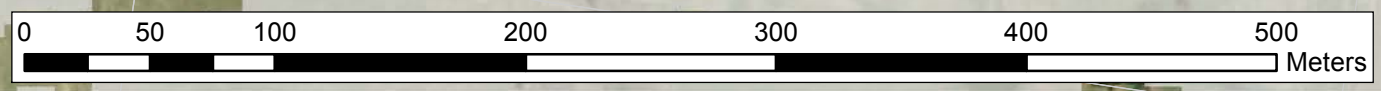
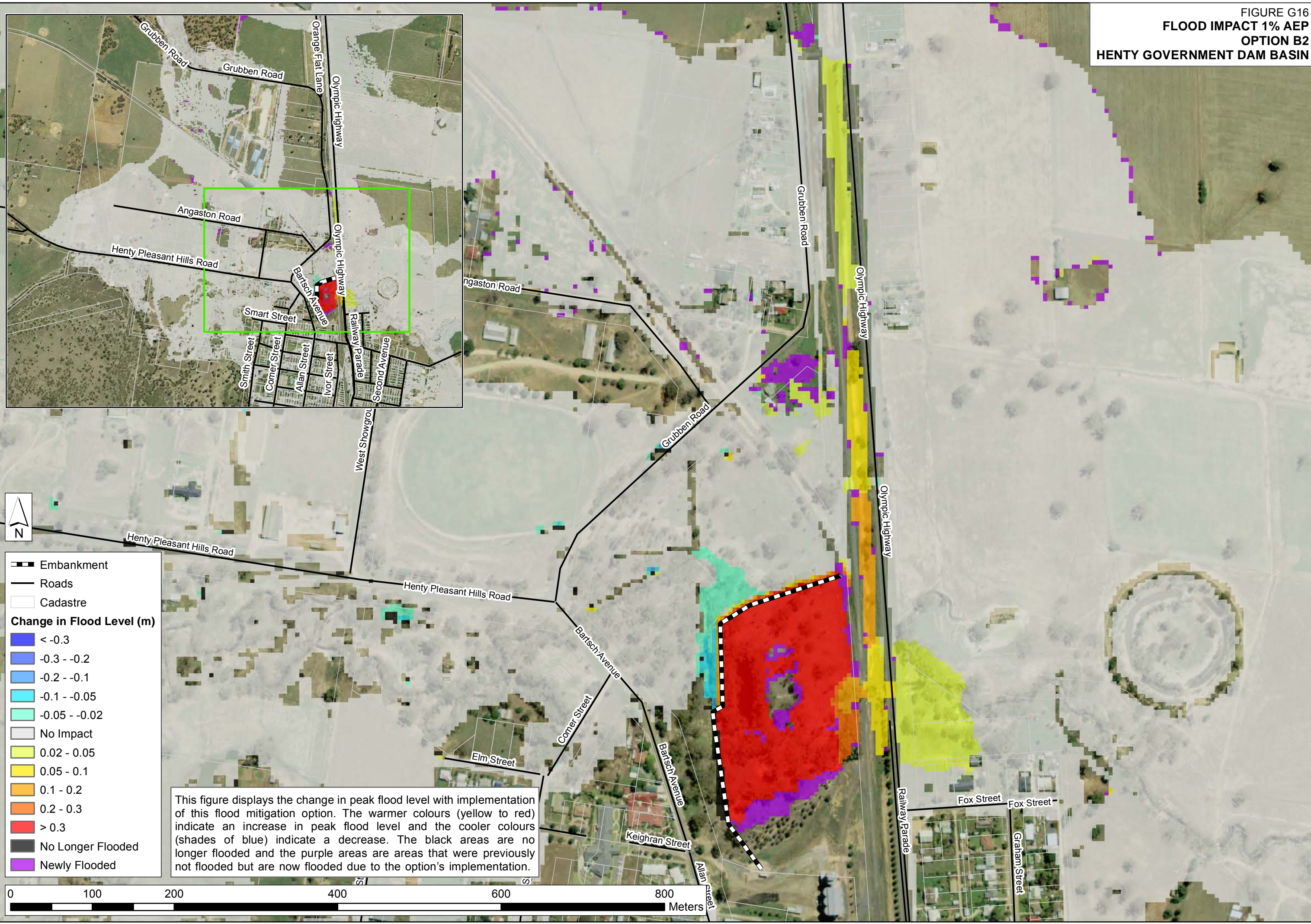


FIGURE G16
**FLOOD IMPACT 1% AEP
 OPTION B2
 HENTY GOVERNMENT DAM BASIN**



- Embankment
- Roads
- Cadastre
- Change in Flood Level (m)**
- < -0.3
- 0.3 - -0.2
- 0.2 - -0.1
- 0.1 - -0.05
- 0.05 - -0.02
- No Impact
- 0.02 - 0.05
- 0.05 - 0.1
- 0.1 - 0.2
- 0.2 - 0.3
- > 0.3
- No Longer Flooded
- Newly Flooded

This figure displays the change in peak flood level with implementation of this flood mitigation option. The warmer colours (yellow to red) indicate an increase in peak flood level and the cooler colours (shades of blue) indicate a decrease. The black areas are no longer flooded and the purple areas are areas that were previously not flooded but are now flooded due to the option's implementation.

