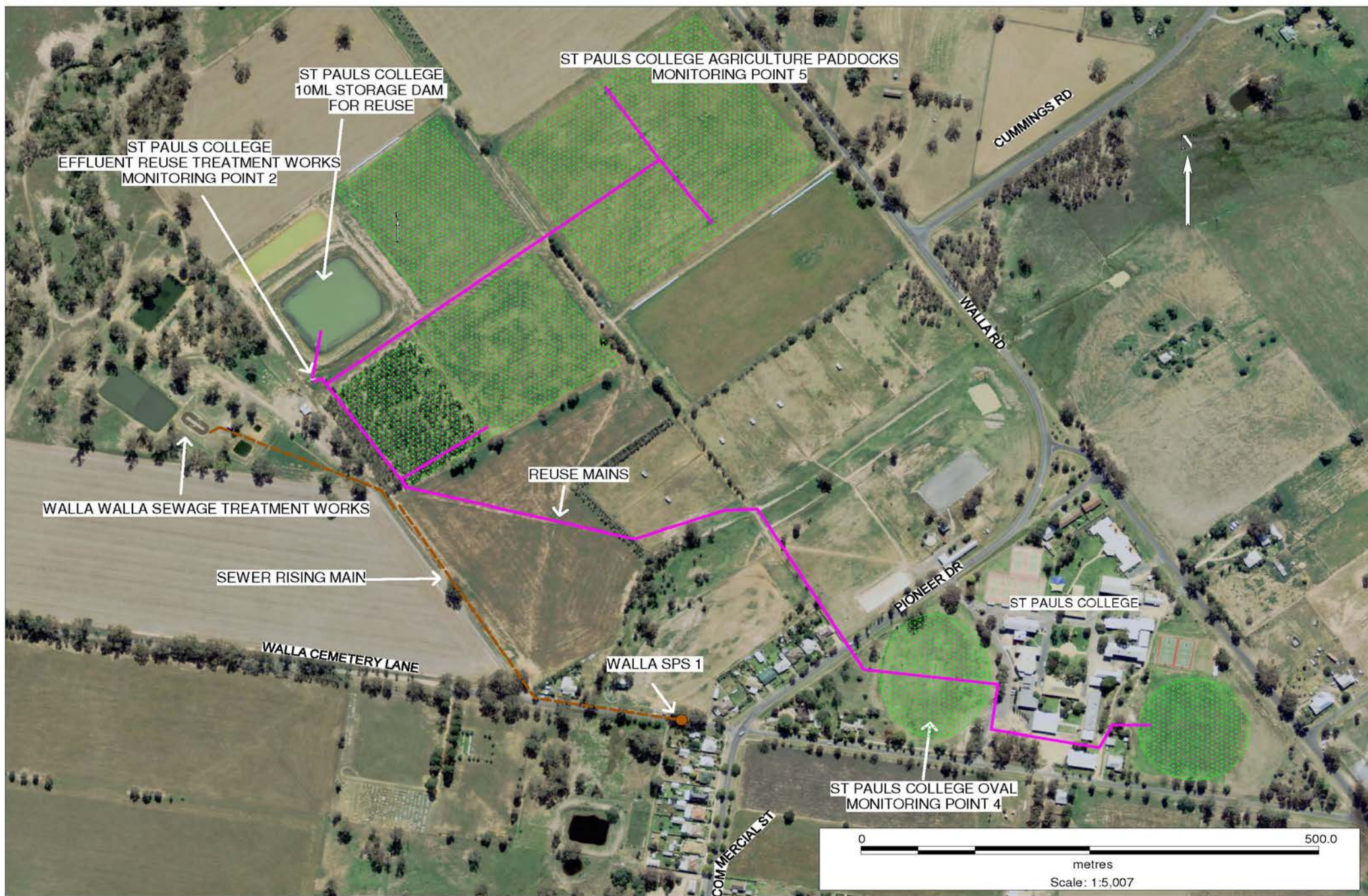


**POLLUTION MONITORING DATA
WALLA WALLA EFFLUENT REUSE AREAS**



Environment Protection Licence No.: 2563

Link to full licence on EPA website:

<http://www.environment.nsw.gov.au/prpoeoapp/ViewPOEOLicence.aspx?DOCID=31292&SYSUID=1&LICID=2563>

Licensee: Greater Hume Shire Council, PO Box 99 Holbrook NSW 2644

Address of facility: Klemke Avenue, Walla Walla NSW 2659

Monitoring Point 2

Location: Pump station discharge flow meter to effluent reuse area

Published: 22 June 2012

Obtained: 4 June 2012

Sampled: From 1 July 2011 to 31 May 2012

| Item | Unit | Frequency | Lowest result | Mean result | Max result | Volume limit | Exceedence (yes/no) |
|------------|--------|-----------|---------------|-------------|------------|--------------|---------------------|
| Daily flow | kl/day | Daily | 0 | 7 | 216 | N/A | N/A |

Monitoring Point 4

Location: St Paul's College Oval effluent reuse area

Published: 22 June 2012

Obtained: 4 June 2012

Sampled: 2 May 2012

| Pollutant | Unit | Frequency | Sampling Method | Measurement | Comments |
|--------------------|-------------------------|-----------|------------------|-------------|----------|
| Conductivity | deciSiemens per metre | Yearly | Composite sample | 0.167 | |
| Nitrogen (total) | milligrams per kilogram | Yearly | Composite sample | 2020 | |
| Phosphorus (total) | milligrams per kilogram | Yearly | Composite sample | 226 | |
| Sodium Adsorption | sodium adsorption ratio | Yearly | Composite sample | 2.8 | |

Monitoring Point 5

Location: St Paul's College Agricultural paddocks effluent reuse area

Published: 22 June 2012

Obtained: 4 June 2012

Sampled: 2 May 2012

| Pollutant | Unit | Frequency | Sampling Method | Measurement | Comments |
|--------------------|-------------------------|-----------|------------------|-------------|----------|
| Conductivity | deciSiemens per metre | Yearly | Composite sample | 0.161 | |
| Nitrogen (total) | milligrams per kilogram | Yearly | Composite sample | 1890 | |
| Phosphorus (total) | milligrams per kilogram | Yearly | Composite sample | 397 | |
| Sodium Adsorption | sodium adsorption ratio | Yearly | Composite sample | 6.2 | |