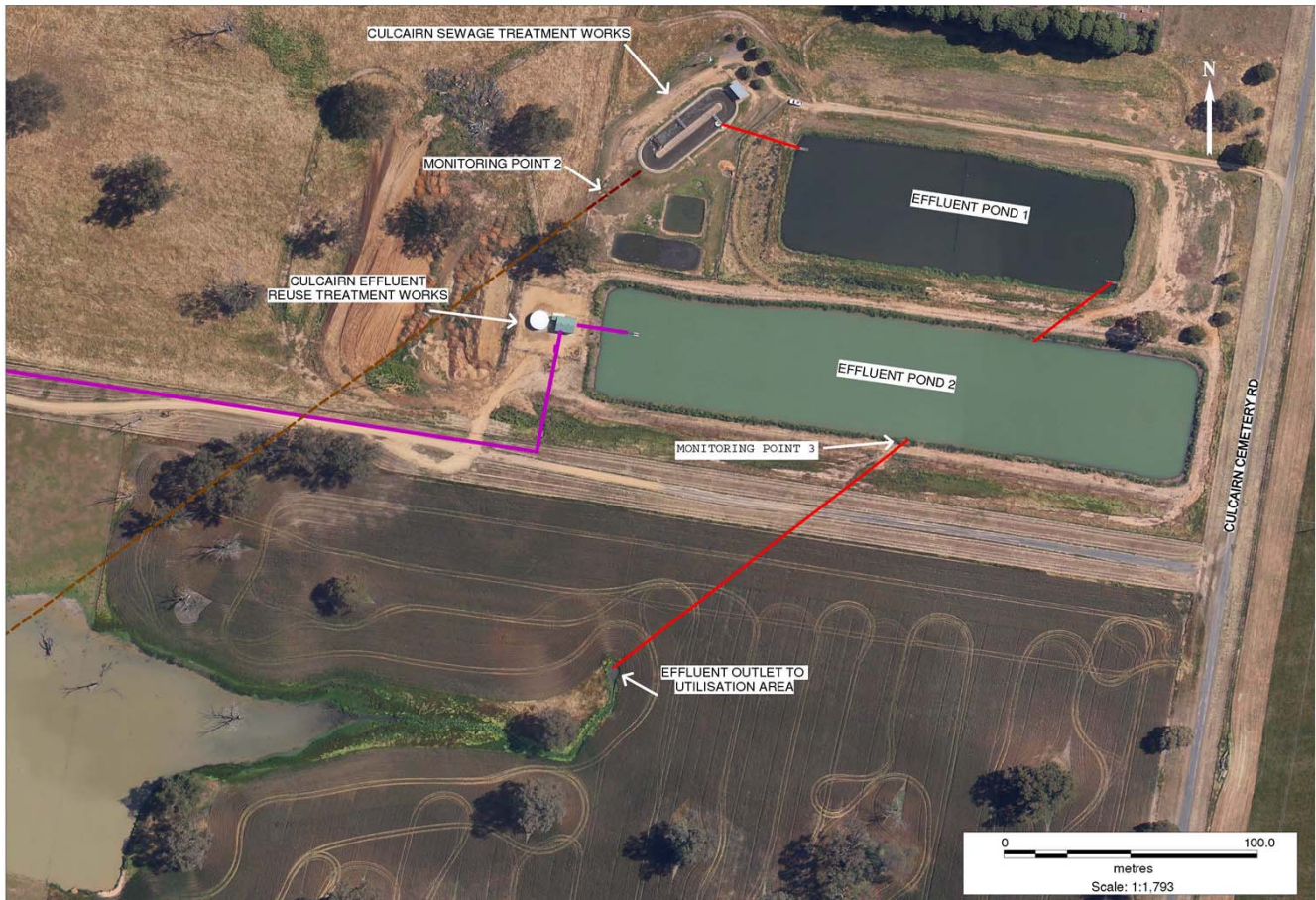


**POLLUTION MONITORING DATA
CULCAIRN SEWAGE TREATMENT WORKS**



Environment Protection Licence No.: 3727

Link to full licence on EPA website:

<http://www.environment.nsw.gov.au/prpoeoapp/ViewPOELicence.aspx?DOCID=31291&SYSUID=1&LICID=3727>

Licensee: Greater Hume Shire Council, PO Box 99 Holbrook NSW 2644

Address of facility: Cemetery Road, Culcairn NSW 2660

Monitoring Point 2

Location: Flow meter at the inlet to Sewage Treatment Plant

Published: 22 June 2012

Obtained: 1 June 2012

Sampled: From 1 July 2011 to 31 May 2012

Item	Unit	Frequency	Lowest result	Mean result	Max result	Volume limit	Exceedence (yes/no)	Comments
Daily flow	kl/day	Daily	205	252	981	300	Under review	Wet weather event

Monitoring Point 3

Location: Sampling point prior to discharge from effluent pond 2

Published: 22 June 2012

Obtained: 28 May 2012

Sampled: 16 May 2012

Pollutant	Unit	Frequency	Measurement	100 percentile limit	Exceedence (yes/no)	Comments
Biochemical oxygen demand	mg/l	Quarterly	1	20	no	Retested by Riverina Laboratory on 20/6/12
Chlorophyll-a	ug/L	Quarterly	2.3			
Conductivity	ms/cm	Quarterly	830			
Faecal Coliforms	cfu/100ml	Quarterly	0		no	
Nitrogen (total)	mg/l	Quarterly	2.6	20	no	
Oil and Grease	mg/l	Quarterly	<2	10	no	
pH		Quarterly	8.6			
Phosphorus (total)	mg/l	Quarterly	7.8	10	no	
Total suspended solids	mg/l	Quarterly	4	30	no	