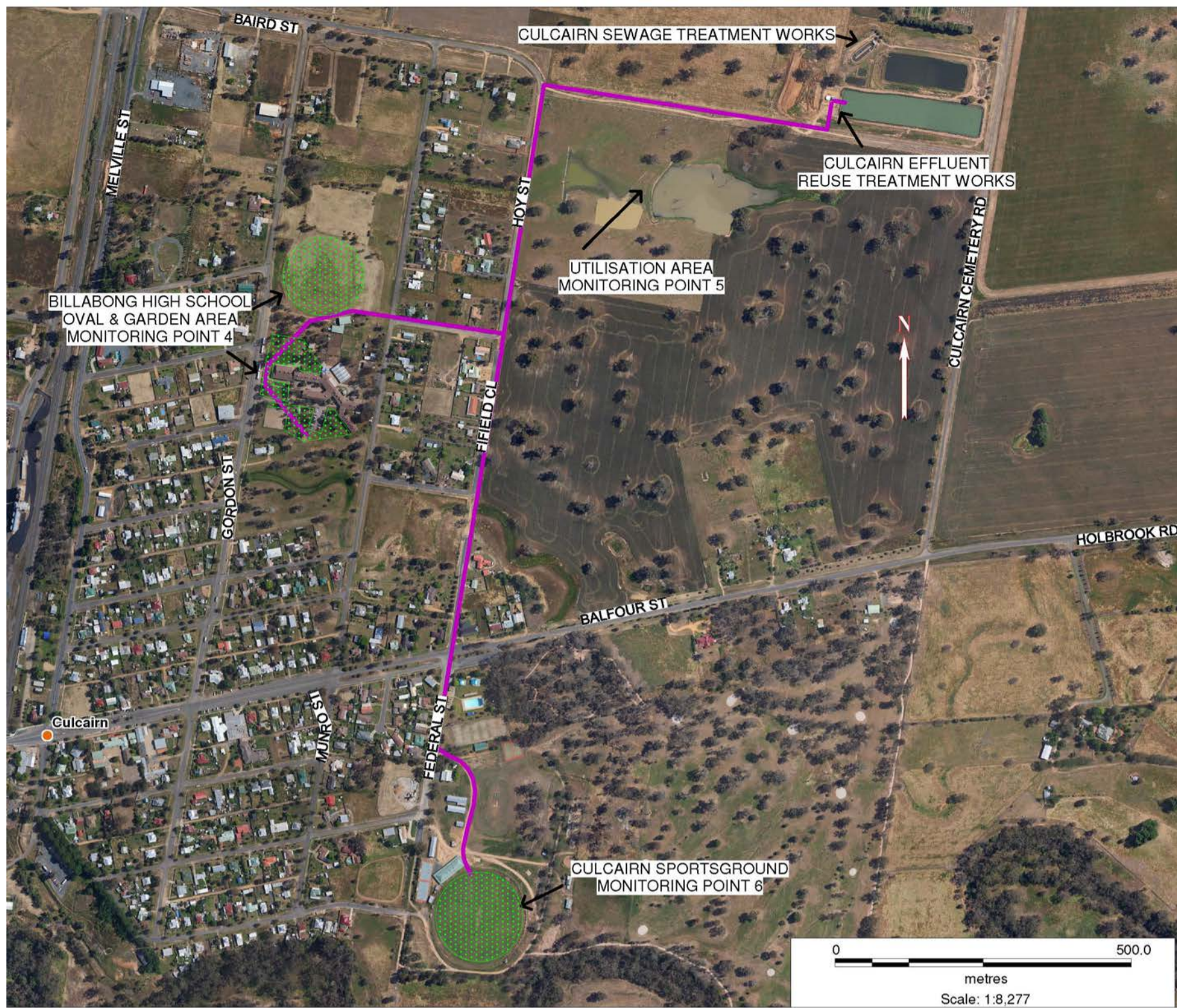


**POLLUTION MONITORING DATA
CULCAIRN EFFLUENT REUSE AREAS**



Environment Protection Licence No.: 3727

Link to full licence on EPA website:

<http://www.environment.nsw.gov.au/prpoeoapp/ViewPOEOLicence.aspx?DOCID=31291&SYSUID=1&LICID=3727>

Licensee: Greater Hume Shire Council, PO Box 99 Holbrook NSW 2644

Address of facility: Cemetery Road, Culcairn NSW 2660

Monitoring Point 4

Location: Culcairn Sportsground effluent reuse area

Published: 22 June 2012

Obtained: 4 June 2012

Sampled: 2 May 2012

Pollutant	Unit	Frequency	Sampling Method	Measurement	Comments
Conductivity	deciSiemens per metre	Yearly	Composite sample	0.279	
Nitrogen (total)	milligrams per kilogram	Yearly	Composite sample	2530	
Phosphorus (total)	milligrams per kilogram	Yearly	Composite sample	354	
Sodium Adsorption	sodium adsorption ratio	Yearly	Composite sample	6	

Monitoring Point 5

Location: Culcairn effluent reuse area (Utilisation area)

Published: 22 June 2012

Obtained: 4 June 2012

Sampled: 2 May 2012

Pollutant	Unit	Frequency	Sampling Method	Measurement	Comments
Conductivity	deciSiemens per metre	Yearly	Composite sample	0.217	
Nitrogen (total)	milligrams per kilogram	Yearly	Composite sample	2180	
Phosphorus (total)	milligrams per kilogram	Yearly	Composite sample	340	
Sodium Adsorption	sodium adsorption ratio	Yearly	Composite sample	7	

Monitoring Point 6

Location: Culcairn Billabong high School, oval and garden area

Published: 22 June 2012

Obtained: 4 June 2012

Sampled: 2 May 2012

Pollutant	Unit	Frequency	Sampling Method	Measurement	Comments
Conductivity	deciSiemens per metre	Yearly	Composite sample	0.26	
Nitrogen (total)	milligrams per kilogram	Yearly	Composite sample	2400	
Phosphorus (total)	milligrams per kilogram	Yearly	Composite sample	260	
Sodium Adsorption	sodium adsorption ratio	Yearly	Composite sample	10.9	