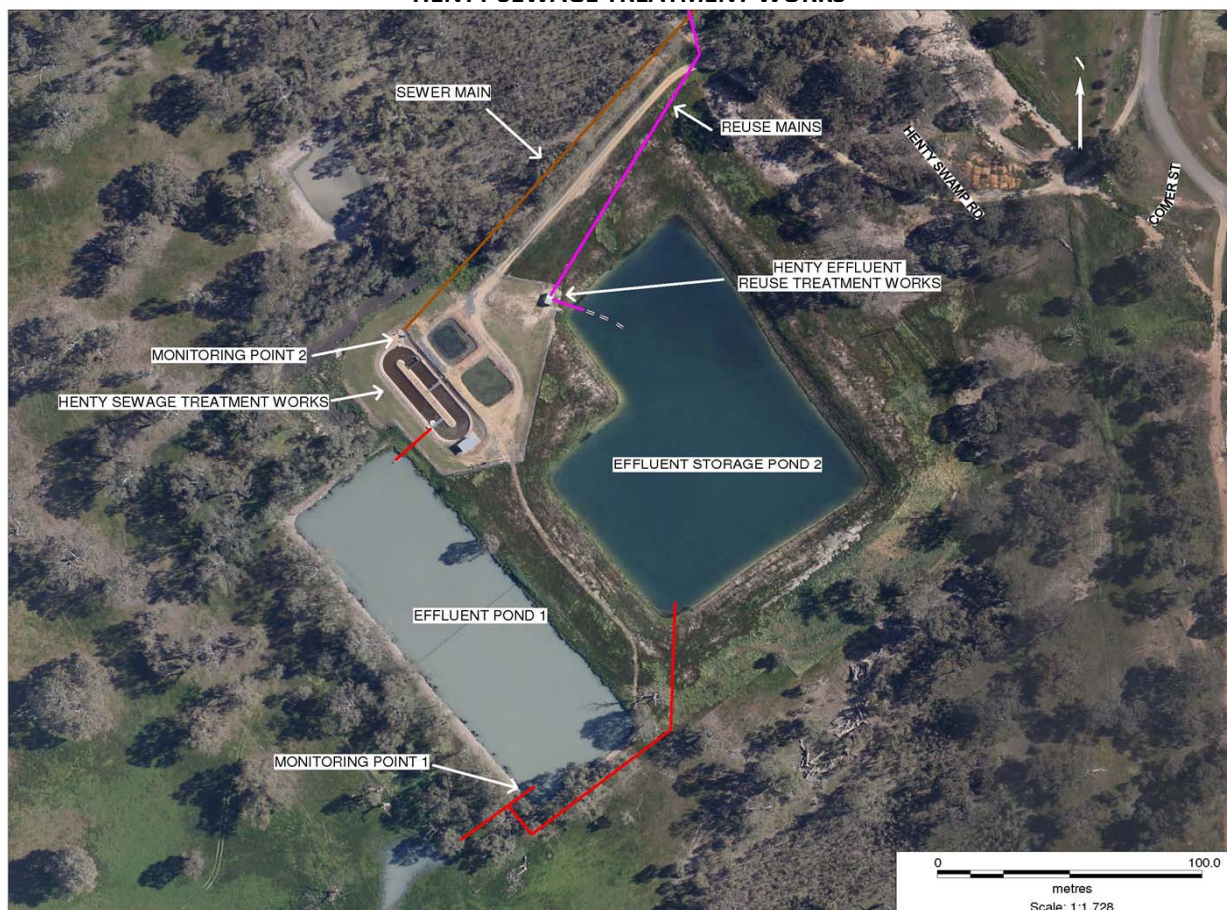


**POLLUTION MONITORING DATA
HENTY SEWAGE TREATMENT WORKS**



Environment Protection Licence No.: 3726

Link to full licence on EPA website:

<http://www.environment.nsw.gov.au/prpoeoapp/ViewPOEOLicence.aspx?DOCID=31290&SYSUID=1&LICID=3726>

Licensee: Greater Hume Shire Council, PO Box 99 Holbrook NSW 2644

Address of facility: Comer Street, Henty NSW 2658

Monitoring Point 1

Location: Sampling point prior to discharge from effluent pond 1

Published: 12 Sept 2012

Obtained: 31 Aug 2012

Sampled: 15 Aug 2012

Pollutant	Unit	Frequency	Measurement	100 percentile limit	Exceedence (yes/no)	Comments
Biochemical oxygen demand	mg/l	Quarterly	<5	20	no	
Chlorophyll-a	ug/L	Quarterly	<5			
Conductivity	ms/cm	Quarterly	680			
Faecal Coliforms	cfu/100ml	Quarterly	12		no	
Nitrogen (total)	mg/l	Quarterly	5.6	20	no	
Oil and Grease	mg/l	Quarterly	<2	10	no	
pH		Quarterly	7.8			
Phosphorus (total)	mg/l	Quarterly	7.1	10	no	
Total suspended solids	mg/l	Quarterly	3	30	no	

Monitoring Point 2

Location: Flow meter at the inlet to Sewage Treatment Plant

Published: 12 Sept 2012

Obtained: 31 Aug 2012

Sampled: From 1 July 2012 to 31 Aug 2012

Item	Unit	Frequency	Lowest result	Mean result	Max result	Volume limit	Exceedence (yes/no)	Comments
Daily flow	kl/day	Daily	158	182	466	250	Under review	Wet weather event