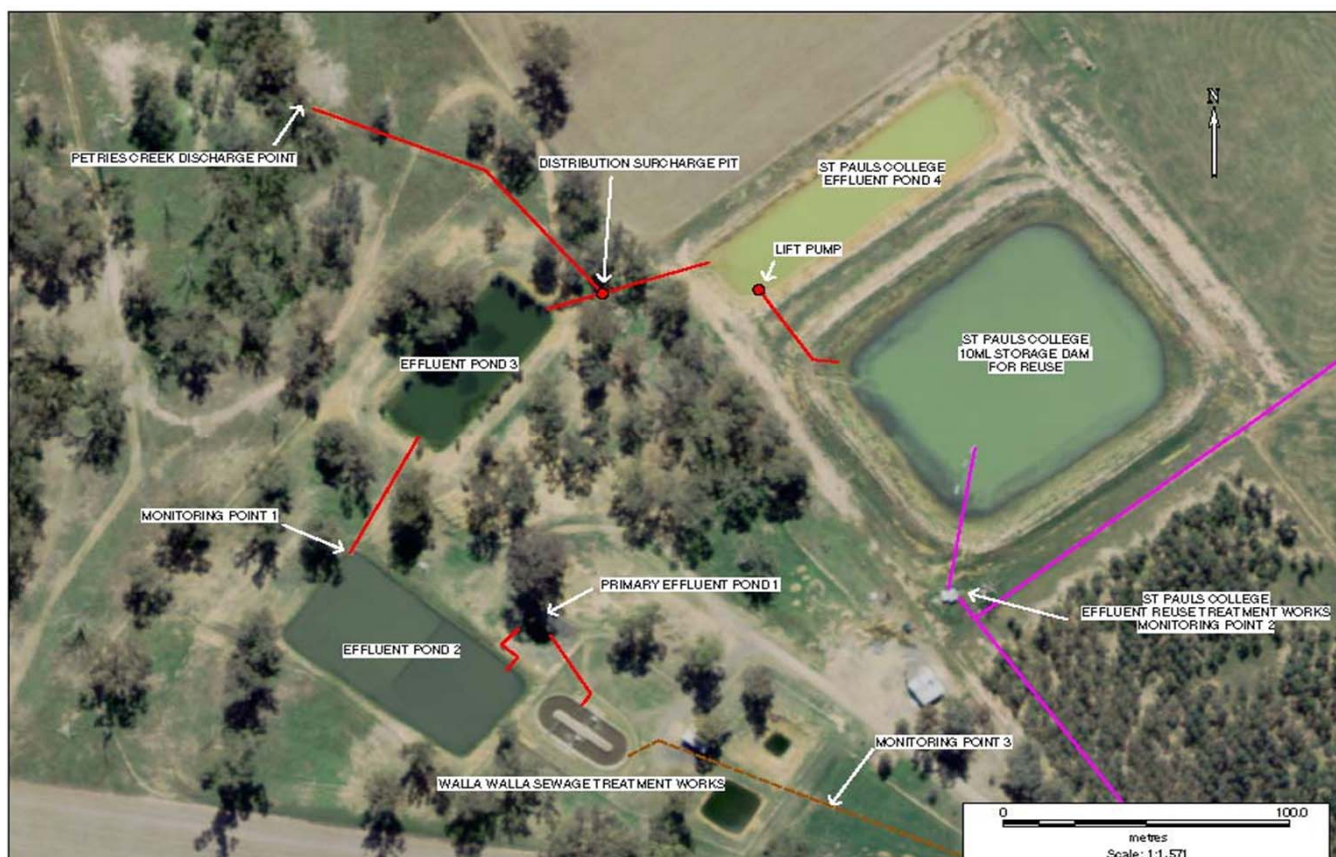


**POLLUTION MONITORING DATA  
WALLA WALLA SEWAGE TREATMENT WORKS**



**Environment Protection Licence No.:** 2563

Link to full licence on EPA website:

<http://www.environment.nsw.gov.au/prpoeoapp/ViewPOEOLicence.aspx?DOCID=31794&SYSUID=1&LICID=2563>

**Licensee:** Greater Hume Shire Council, PO Box 99 Holbrook NSW 2644

**Address of facility:** Klemke Avenue, Walla Walla NSW 2659

**Monitoring Point 1**

**Location:** Sampling point prior to discharge from effluent pond 2

**Published:** 31 July 2013

**Obtained:** 30 Nov 2012

**Sampled:** 21 Nov 2012

Pollutant	Unit	Frequency	Measurement	100 percentile limit	Exceedence (yes/no)	Comments
Biochemical oxygen demand	mg/l	Quarterly	<5	20	no	
Chlorophyll-a	ug/L	Quarterly	25			
Conductivity	ms/cm	Quarterly	540			
Faecal Coliforms	cfu/100ml	Quarterly	22			
Nitrogen (total)	mg/l	Quarterly	8.4	20	no	
Oil and Grease	mg/l	Quarterly	<2	10	no	
pH		Quarterly	9.1			
Phosphorus (total)	mg/l	Quarterly	3.7	10	no	
Total suspended solids	mg/l	Quarterly	7	30	no	

**Monitoring Point 3**

**Location:** Flow meter at the inlet to Sewage Treatment Plant

**Published:** 31 July 2013

**Obtained:** 30 Nov 2012

**Sampled:** From 1 July 2012 to 30 Nov 2012

Item	Unit	Frequency	Lowest result	Mean result	Max result	Volume limit	Exceedence (yes/no)	Comments
Daily flow	kl/day	Daily	97	131	1464	500	no	Wet weather event