

## Greater Hume Councillors



**Picture of Councillors (L to R):** Back - Cr O'Neill, Cr Meyer, Cr Lindner, Cr Parker; Front - Cr Hicks, Cr Wilton, Cr Quinn, Cr Schilg, Cr Forrest.

**Mayor, Cr Tony Quinn** East Ward  
E [tquinn@greaterhume.nsw.gov.au](mailto:tquinn@greaterhume.nsw.gov.au)  
T 0429 674 933

**Deputy Mayor, Cr Annette Schilg** North Ward  
E [aschilg@greaterhume.nsw.gov.au](mailto:aschilg@greaterhume.nsw.gov.au)  
T 0429 906 401

**Cr Ian Forrest** North Ward  
E [iforrest@greaterhume.nsw.gov.au](mailto:iforrest@greaterhume.nsw.gov.au)  
T 0457 522 654

**Cr Matt Hicks** West Ward  
E [mhicks@greaterhume.nsw.gov.au](mailto:mhicks@greaterhume.nsw.gov.au)  
T 0419 602 780

**Cr Ash Lindner** West Ward  
E [alindner@greaterhume.nsw.gov.au](mailto:alindner@greaterhume.nsw.gov.au)  
T 0458 293 328

**Cr Doug Meyer, OAM** North Ward  
E [dmeyer@greaterhume.nsw.gov.au](mailto:dmeyer@greaterhume.nsw.gov.au)  
T 0429 690 999

**Cr Jenny O'Neill** West Ward  
E [joneill@greaterhume.nsw.gov.au](mailto:joneill@greaterhume.nsw.gov.au)  
T 0438 263 417

**Cr Lea Parker** East Ward  
E [lparker@greaterhume.nsw.gov.au](mailto:lparker@greaterhume.nsw.gov.au)  
T 0427 362 723

**Cr Heather Wilton** East Ward  
E [hwilton@greaterhume.nsw.gov.au](mailto:hwilton@greaterhume.nsw.gov.au)  
T 0417 166 731

### Public Forum and Council Meetings

Council has resolved to permit members of the public to now participate in Public Forums or attend the meetings in person subject to strict conditions. Persons wishing to address Council in the forum must register by submitting a written application. The conduct of the forum is governed by the Council's Code of Meeting Practice. For more information and to apply to speak at the public form, go to Greater Hume website, #greaterhume.

### Live Streaming of Meetings

Residents can view Council meetings by tuning into our live streaming on the youtube channel. Go to Greater Hume website to obtain the link of live and previous video recordings along with minutes and agendas of each meeting.

## Trouble Hearing or Speaking?

You can make contact with Council.

Greater Hume Council is adopting the use of the National Relay Service in order to be accessible to people who are deaf or have a hearing or speech impairment.

The National Relay Service (NRS) is an Australian Government initiative that assists people with hearing and speech impairments to contact organisations or individuals by phone.

### Making a National Relay Service Call

If you are deaf or have a hearing impairment or speech impairment, contact us through the National Relay Service ([www.relayservice.com.au](http://www.relayservice.com.au)):

- TTY users phone 133 677, ask for 02 6036 0100 or 1300 653 538
- Speak and Listen users phone 1300 555 727 then ask for 02 6036 0100 or 1300 653 538.
- Internet relay users connect to the NRS then ask for 02 6036 0100 or 1300 653 538.

## Contact Details

Phone - All Offices  
02 6036 0100

**Council Offices**  
**Holbrook Office**  
General Manager / Corporate Services / Community Services  
39 Young Street  
Holbrook NSW 2644

**Culcairn Office**  
Engineering  
Environment and Planning  
40 Balfour Street  
Culcairn NSW 2660

### Customer Relations Centres

**Henty Office and Library**  
32 Sladen Street  
Henty NSW 2658

**Holbrook Library**  
Library Court  
Holbrook NSW 2644

**Jindera Community Hub**  
83 Urana Street  
Jindera NSW 2642

All correspondence to:  
**General Manager**  
PO Box 99  
Holbrook NSW 2644  
E [mail@greaterhume.nsw.gov.au](mailto:mail@greaterhume.nsw.gov.au)  
W [greaterhume.nsw.gov.au](http://greaterhume.nsw.gov.au)  
T 02 6036 0100

## Greater Hume Information Guides

Download from website or pick up at a Customer Relations Centre.

- Residents Guide
- Visitors Guide
- Buy Local Business Directory
- Event Planning Guide



Greater  
Hume  
Council

# Council Update

## Mayors Message

The term of this Council ends on 14 September 2024. Due to Covid 19 the term was 2 years and 9 months rather than the normal 4 years.

During the development of the Community Strategic Plan the feedback from the community has been analysed and the themes identified. Overwhelmingly, the key themes of communication, consultative decision making and infrastructure maintenance and renewal were once again reinforced as the principle areas in which our residents are seeking ongoing improvement. There will be a focus on these areas during the course of this Delivery Program. It is also noted that our community seek ongoing improvement in our infrastructure especially in our roads and our customer relationships with rate payers. We hope to strive to achieve these goals.

The combined Delivery Plan and Operational Plan is a key document of the integrated planning and reporting (IP&R) system, which all councils in NSW are required to prepare. Briefly, IP&R is a planning process which enables Greater Hume Council to best leverage its efforts while planning for its future.

Each year the Independent Pricing and Regulatory Tribunal (IPART) issues the maximum amount by which local government councils can increase their rates. For the 2024/2025 year IPART determined the maximum amount for Greater Hume Council would be 5.2%.

Along with the many vital programs and services identified in the 2022 – 2026 Delivery Plan and next year's Operational Plan, Councils (1 July 2024 – 30 June 2025) key outcomes include:

- Replacement of Council's ageing infrastructure (e.g. major road reconstruction projects and stormwater drainage).
- Projects to provide growth opportunities (e.g. completion of the next stage of residential developments in Culcairn and Walla Walla).
- Upgrade of the Culcairn Library and Customer Relations service area.

Despite significant funding constraints from other levels of government, Council is committed to delivering services and facilities that our residents need. Council firmly believes the strategies implemented over the past few years along with a preparedness to continually reform the organisation will provide long term sustainability for your council.

Mayor, Cr Tony Quinn

## Senior Staff and Council's Role in the Greater Hume Community



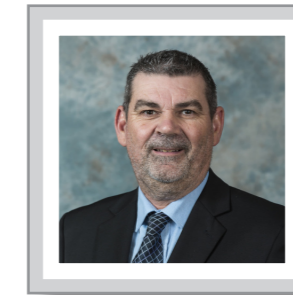
Picture of Evelyn Arnold,  
General Manager

Strategic Planning  
Governance  
Economic Development  
Community Engagement  
Tourism Promotion  
Policy Development  
REROC  
WHS/Risk Management



Picture of Louise Frichtot,  
Director Corporate and  
Community Services

Corporate Services  
Community Services  
Finance  
Information Technology  
Youth Services  
Greater Hume Children  
Services



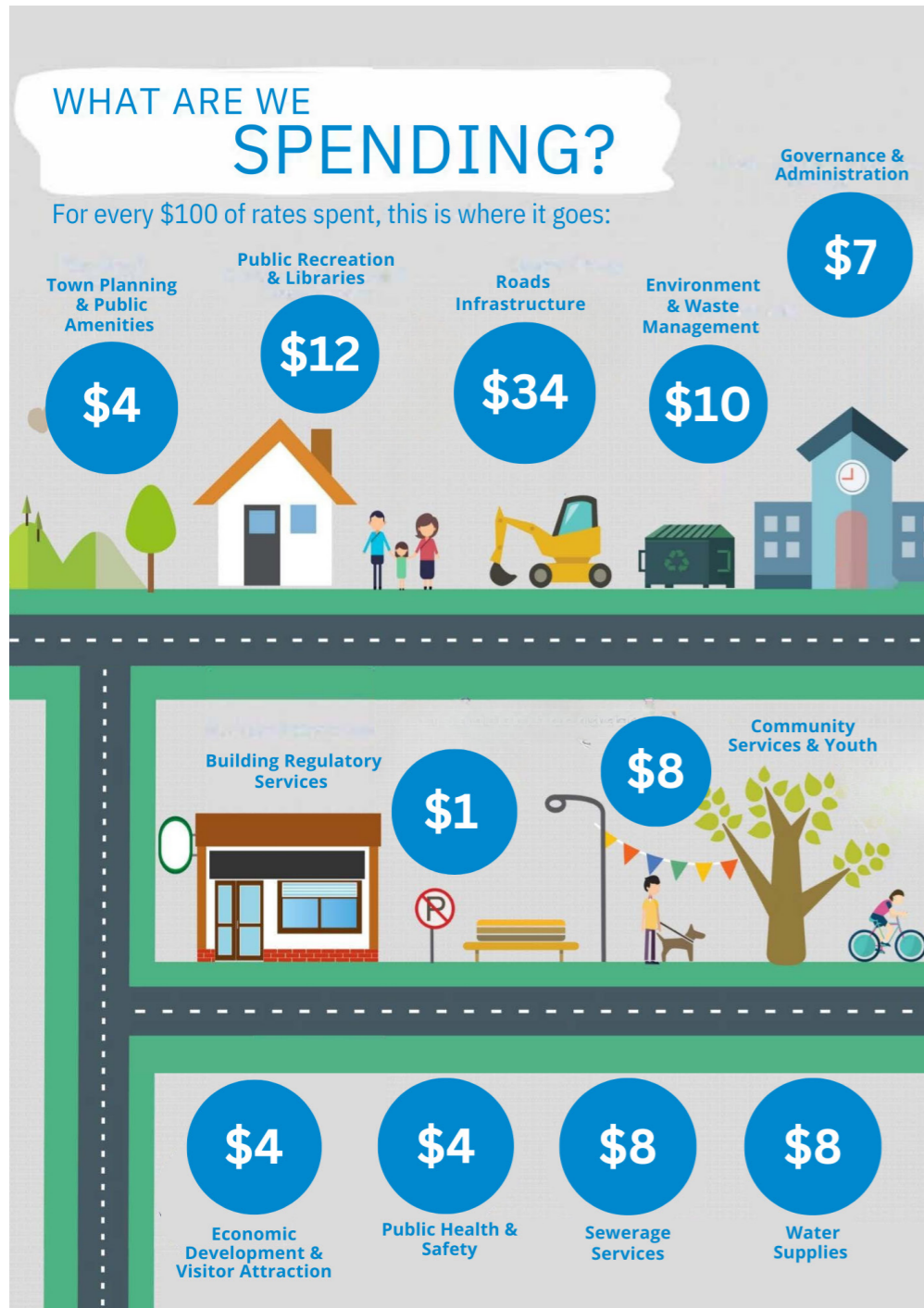
Picture of Greg Blackie,  
Director Engineering

Engineering  
Assets  
Traffic and Infrastructure  
Water and Sewer  
Works  
Parks and Reserves  
Road Safety



Picture of Colin Kane,  
Director Environment and  
Planning

Environment and Planning  
Building Services  
Environmental Services  
Planning Services  
Regulatory  
Public Cemeteries  
Swimming Pools



### Where does the money come from?

29% rates and annual charges.

20% capital grants and contributions.

29% operating grants and contributions.

16% user charges and fees.

4% other.

### Grants Allocated to Greater Hume Council for 2023-2024

Major grants allocated to Greater Hume Council during the 2023 - 2024 financial year

<b>Transport for NSW</b>	
Regional Road and Local Repair Program	\$5,329,065.00
Regional Roads Block Grant	\$2,376,000.00
<b>Commonwealth Infrastructure, Transport, Regional Development Communications and the Arts</b>	
Roads to Recovery	\$1,404,050.00
HVSSP Safer Roads Program	\$358,650.00
<b>NSW State Library</b>	
Library Subsidy	\$92,453.00
<b>Library Council of NSW</b>	
Public Library Infrastructure Grant	\$199,696.00
<b>NSW Rural Fire Service</b>	
Annual Maintenance and Repair Grant	\$340,627.00
<b>NSW Department of Planning Housing and Infrastructure</b>	
West Jindera Residential Land Precinct	\$165,000.00
<b>Department of Regional NSW</b>	
Billabong Little Athletics Shed and Facilities	\$174,223.00
<b>Commonwealth Department of Education</b>	
Community Child Care Fund Sustainability	\$713,999.00
Start Stronger Pathways	\$312,243.00

Find us on

### Sharing and Connecting

Like and/or follow us:

**Instagram** - visitgreaterhume

**Facebook** -

- Greater Hume Council
- Visit Culcairn Henty Holbrook Jindera Walla Walla
- Buy Local in Greater Hume
- Greater Hume Council Youth Advisory Committee
- Greater Hume Council Libraries
- Greater Hume Children Services

When posting pictures or stories include hashtags, so the world can see how wonderful our region is.

- #visitgreaterhume
- #greaterhume
- #(town or village name, eg brocklesby, burrumbuttock, culcairn, gerogery, henty, holbrook, jindera, morven, walbundrie, wallawalla, woomargama)
- #visitriverinamurray, #visitthemurray, visitnsw.

### Pension Concession

If you hold a Pensioner Concession or a Department of Veterans Affairs Card you may be eligible for a concession on both your rates and water. The Concession is available only on your primary residence and your pension or DVA card must reflect this address. Please note that NSW does not grant concessions on Health Care cards. If you are receiving a rebate on your rates it will automatically carry over onto your water account.

To apply, complete a Pension Concession Application and attach a copy of your Centrelink Pension Card. Your application will then be processed by our Finance Team and an amended rates notice will be sent out to you.

**Pensioner Concession Forms can be downloaded from #greaterhume website or picked up from one of Greater Hume's Customer Relations Centres.**

### Budget for 2024 - 2025

Highlights of the 2024 - 2025 budget includes:

- \$50m - Total Budget
- \$21m - Capital Works
- \$29m - Operating Expenditure
- \$5m - Recreation and Cultural Facilities
- \$5.2m - Community Service Activities
- \$7.2m - Road, Bridge and Footpath Projects
- \$11.5m - Water and Sewer Services
- \$7.3m - Environmental Protection Activities

### Greater Hume Council Newsletter Sent to Your Email Address

Greater Hume Council Newsletters will now be sent via your email address which has been provided by you to Council.

Hard copies will also be available at our Customer Relations Centres or can be viewed or downloaded from #greaterhume.

If you have a new email address or wish to be sent a hard copy of the Newsletter contact Council via 02 6036 0100 or email [website@greaterhume.nsw.gov.au](mailto:website@greaterhume.nsw.gov.au).



## Save the date

### 2024 NSW Local Government elections

Saturday, 14 September

Voting is compulsory

Visit [elections.nsw.gov.au/lge24](https://elections.nsw.gov.au/lge24) or call 1300 135 736